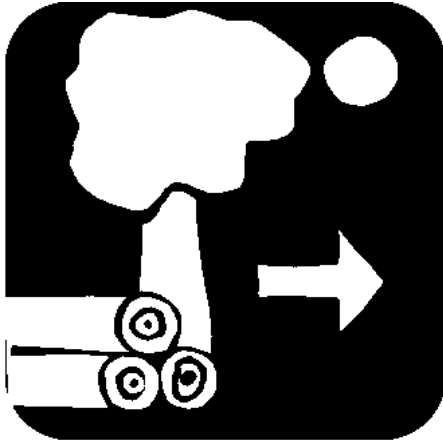




# Building a Safe Campfire



Build campfires away from overhanging branches, steep slopes, rotten stumps, logs, dry grass and leaves.



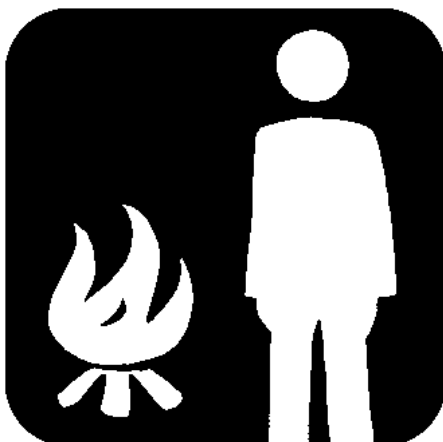
*Start with dry twigs and small sticks.*



Keep the campfire small. A good bed of coals or a small fire surrounded by rocks gives plenty of heat. Use an existing fire ring.



*Add larger sticks as the fire builds up.*



Never leave a campfire unattended. Even a small breeze could quickly cause the fire to spread.



*Put the big pieces on last, pointing them toward the center, and pushing them into the flames.*